

ATTACHMENT A

ATTACHMENT A

PROJECT SCOPE PLAN

Introduction

Hyde Park South Café is a new café to be built in conjunction with the Transport for NSW Easy Access Upgrade program for Museum Station. These works will replace the old kiosk as well as provide a new accessible lift lobby to the station below. The proposed café will sit respectfully alongside the original heritage Museum Station building allowing views of the old facades as well as providing a new connection from the station directly to Hyde Park.

The heritage setting around the café will also be upgraded as a part of the project. Significant heritage fabric will be retained. New works include landscaping, paths and stairs. These works will provide an accessible route from the Museum Station and Liverpool Street to the café and the park. A new paved terrace will accommodate alfresco café seating within a parkland setting.



View A from south east



View B from north east

Have your say

The proposed concept design will be on exhibition from 13th October to 27th October 2015. The City welcomes feedback on the concept design.

Postal address:

City of Sydney, GPO Box 1591 Sydney 2001

Website on:

You can review the concept design and provide feedback online at sydneyyoursay.com.au

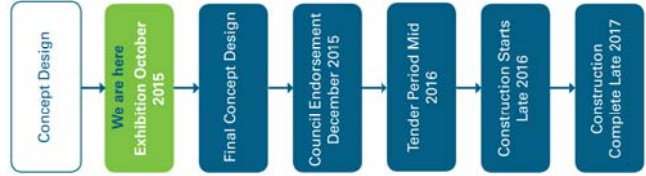
General Enquiries

Tel: 02 9265 9333
 (24 hours, 7 days per week)
 Fax: 02 9265 9222
council@cityofsydney.nsw.gov.au
cityofsydney.nsw.gov.au

Contact

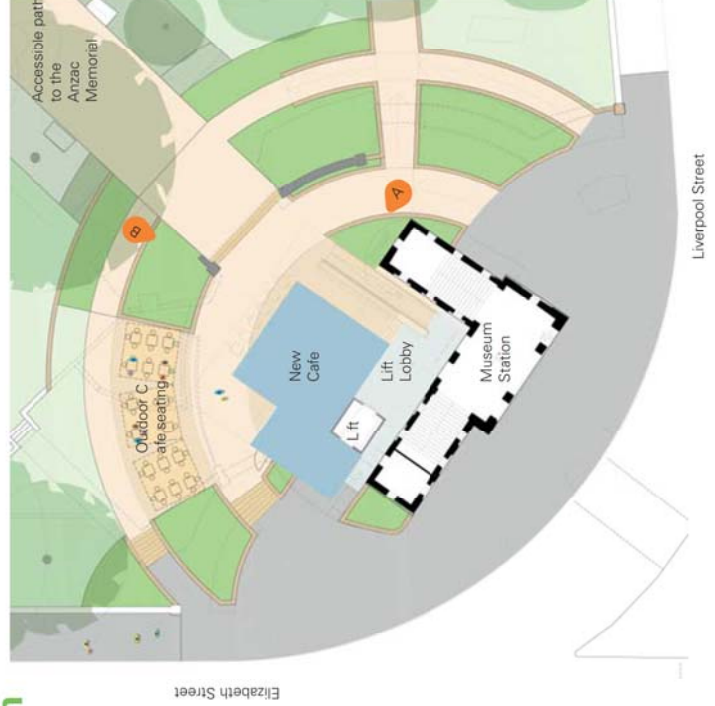
For more information, please contact
 Adam Lander, Community Engagement
 Coordinator, on 02 9265 9333 or email
alander@cityofsydney.nsw.gov.au

Project Timeline



Landscape Layout Plan

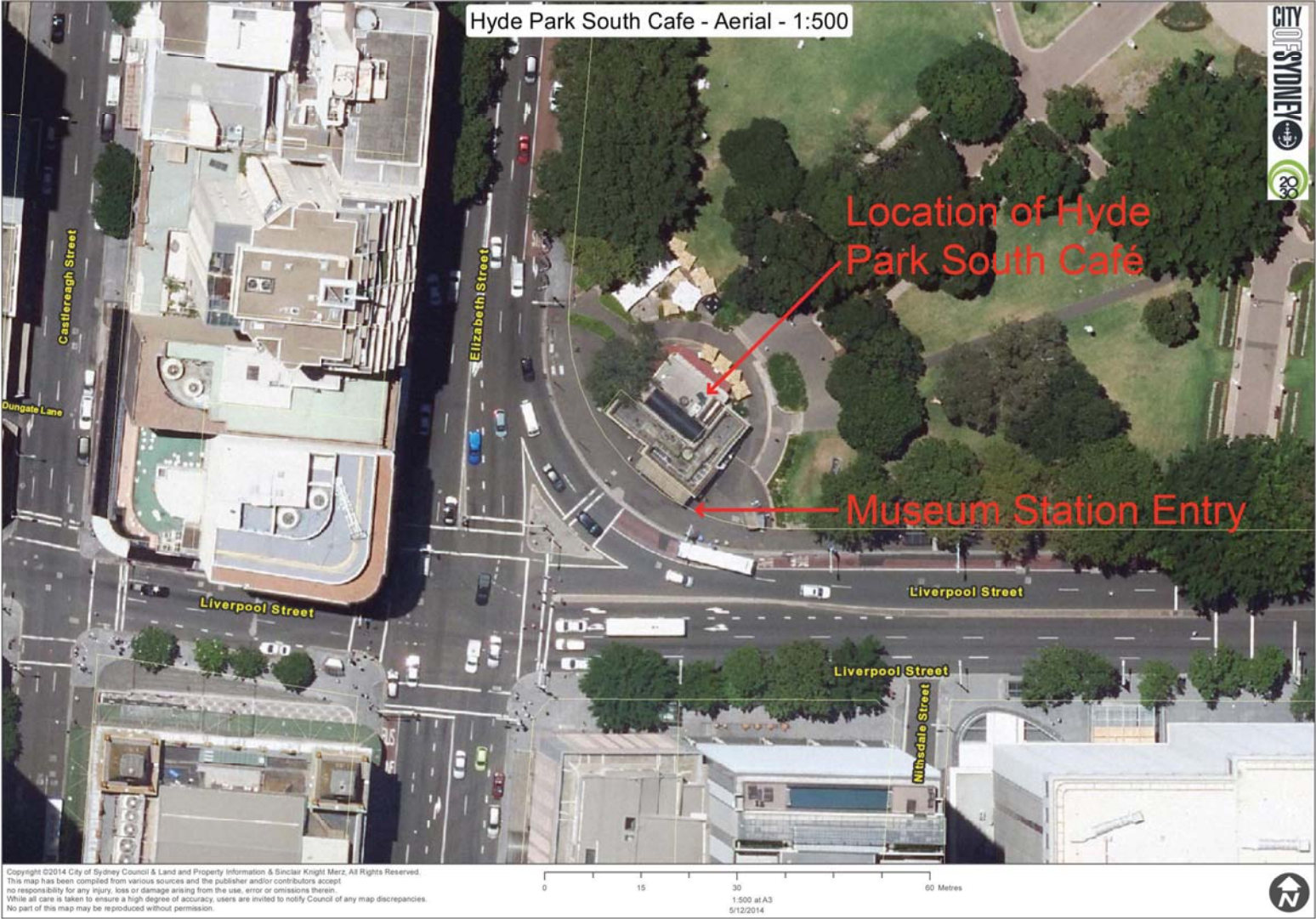
- Standard street pavement
- Granite paving
- Park pavement: in accord with site paving strategy
- Proposed café structure
- Proposed garden beds
- Perspective Views



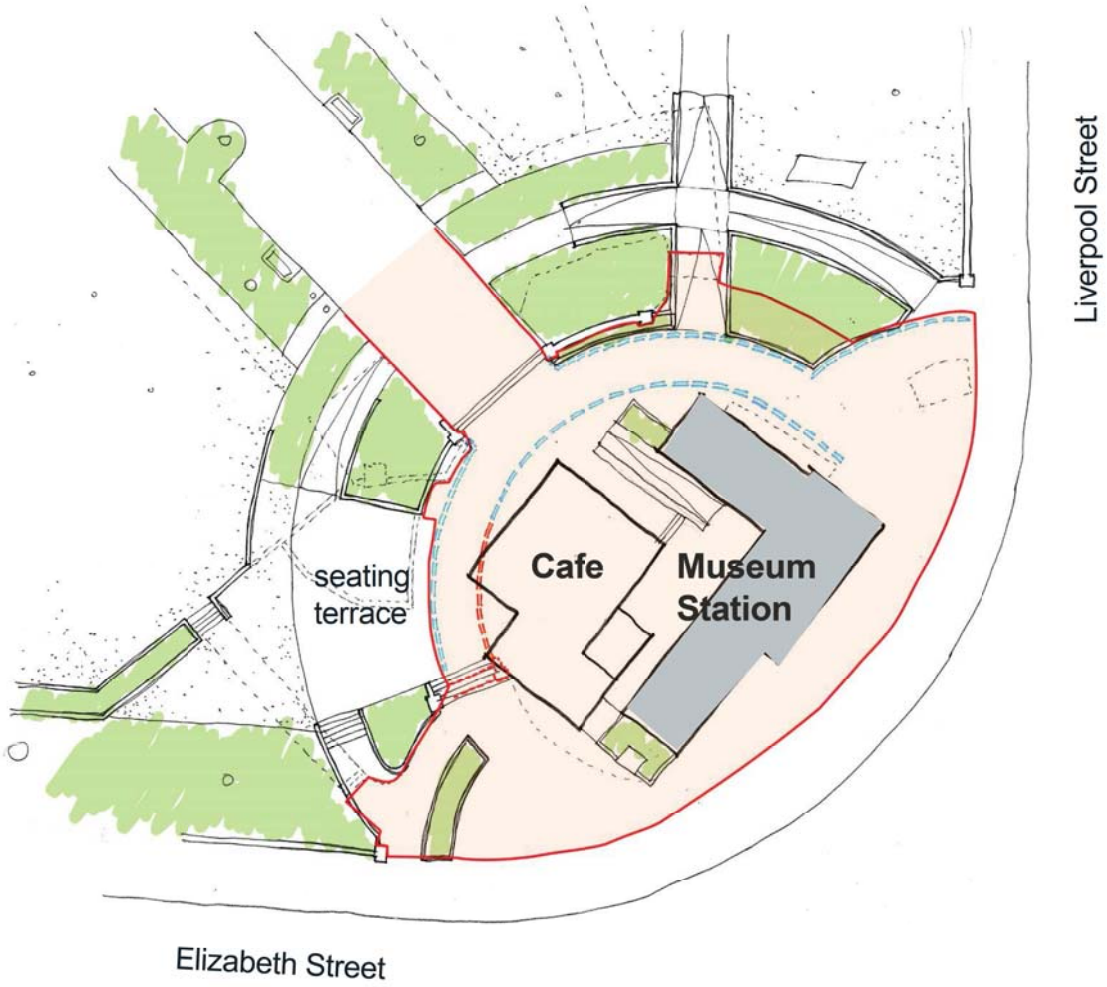
Elizabeth Street



ATTACHMENT A



ATTACHMENT A



city of villages

ATTACHMENT A



Sydney 2030 Green Global Connected



city of villages

ATTACHMENT A

